

# dynamic rubbers

PVT. LTD.



**40+**   
Years of  
Experience

**52+**   
Exporting  
Countries

**30+**   
Product  
Range

**Product Catalogue**

**Bulk Material  
Handling Solutions**

Know more about us  
[www.dynamicrubbers.com](http://www.dynamicrubbers.com)



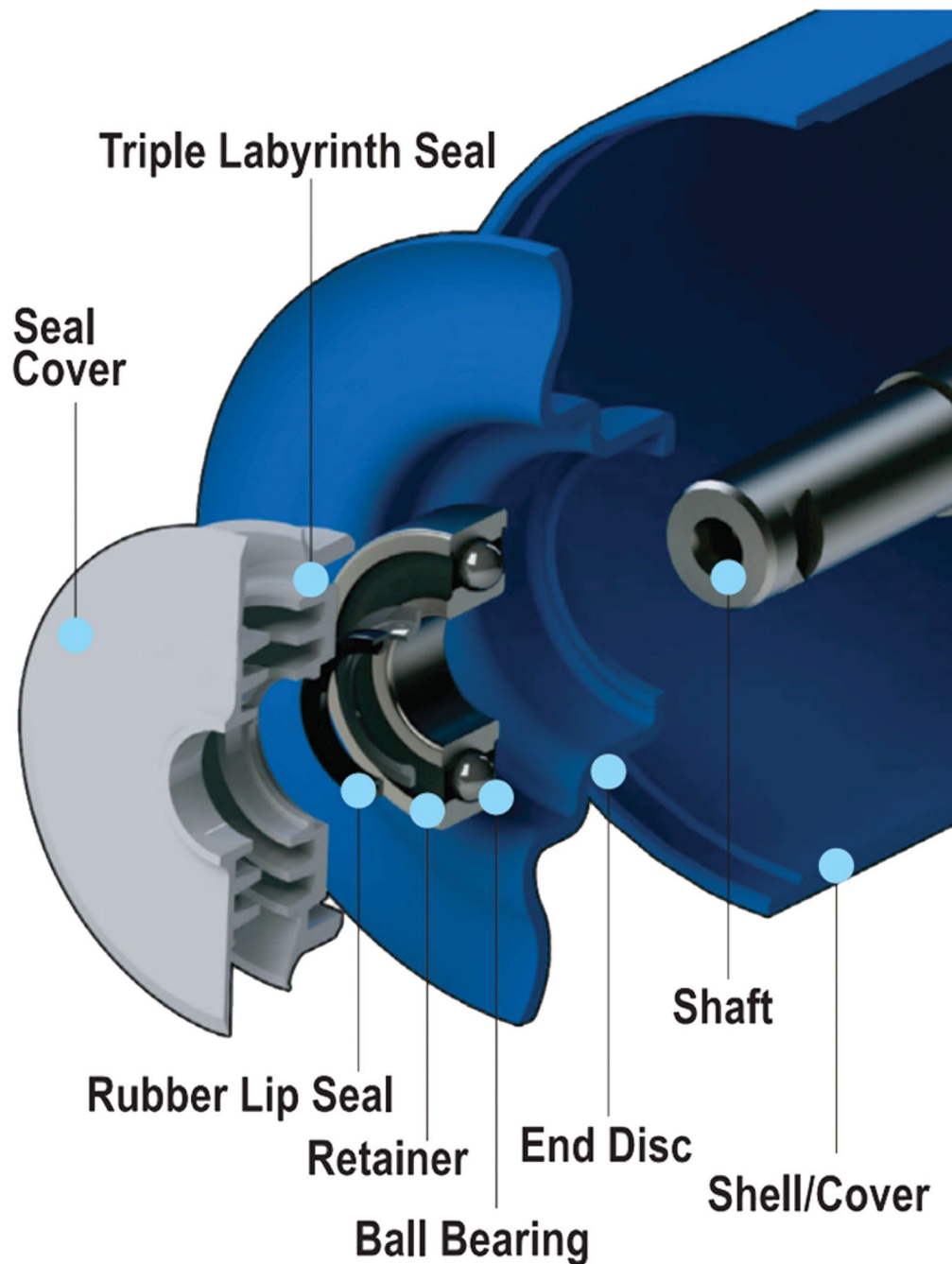
Conveyor Accessories.

# Idler Roller and Pulleys

DYNAMIC offers a comprehensive array of idlers, pulleys, and frames tailored to diverse needs. Both fixed frame type and garland (festoon) variants are crafted. A wide range of idlers encompasses carrying, return, troughing, training, impact, transition, and pipe conveyor rollers. Besides standard options, DYNAMIC crafts specialized idlers like non-magnetic, weighing, vibration-free garland for machinery, live shaft, and rubber-lined for corrosive settings. Picking table idlers are also available. Our offerings encompass varied idler solutions to cater to specific demands across industries.

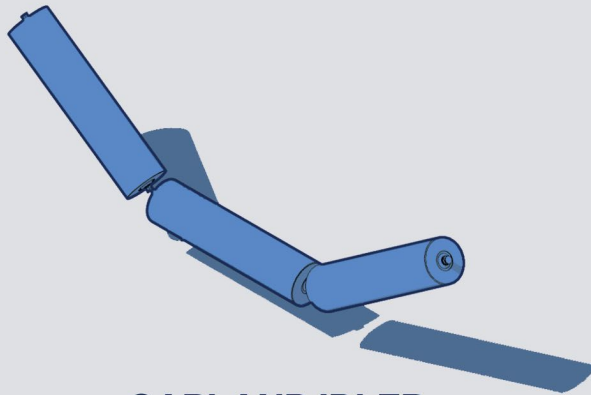
## Reliability Starts with a great Product

- ▶ Sealed for life ball bearings.
- ▶ Triple Labyrinth Seal.
- ▶ Product line offering of 18" - 96" belt widths.
- ▶ Extremely low rolling resistance ie. lowest operator cost.
- ▶ Drop-In replacement rolls for all major competitors.
- ▶ We Supply Idlers & upto the width of 2400 MM



**Seal Guard Design for long life.**

- ▶ **External Shield** deters impurities from entering the bearing housing.
- ▶ **Flinger Design** removes contaminants away from the bearing housing by centrifugal force.
- ▶ **Triple Labyrinth Seal** design is grease filled that results in lower drag and keeps contaminants away from the bearing.

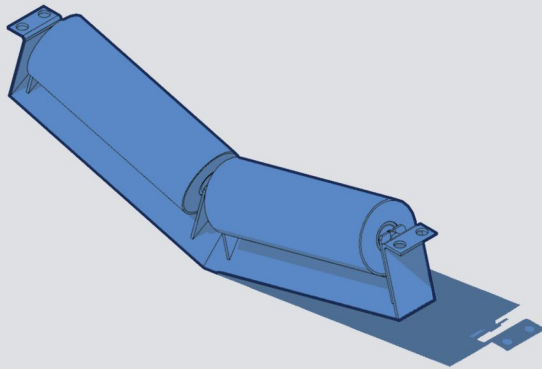


**GARLAND IDLER**

Light and Economical with increased carrying capacity.

No training idlers required.

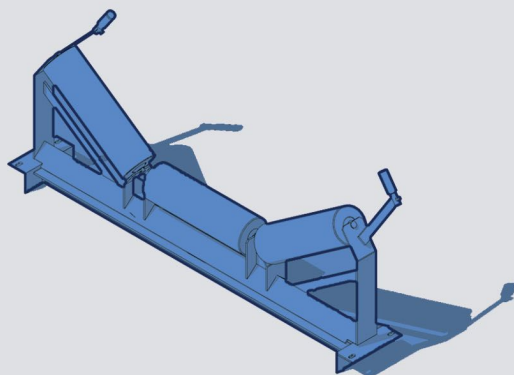
**DYNAMIC's garland idlers** offer longer belt life and reduced equipment damage from impact loads.



**V-RETURN IDLERS**

Aligning high-tension fabric or cable belts can pose challenges.

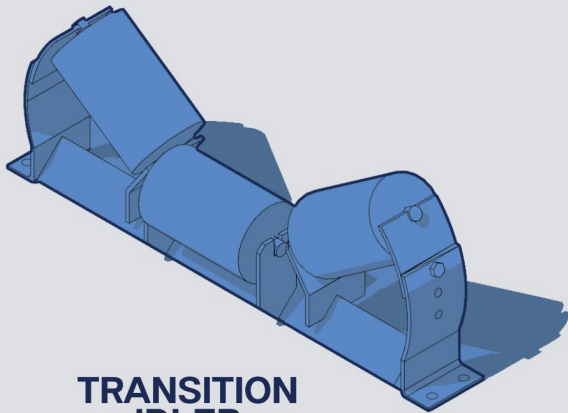
**DYNAMIC's v-return idlers** offer improved belt tracking and extended lifespan compared to flat returns. They feature a V-shaped profile with two rolls at either 10° or 15° angles.



**SELF-TRAINING IDLERS**

When conveyor belts deviate, material spillage can happen. Placing self-training idlers strategically ensures proper belt alignment.

**DYNAMIC's self-trainers** resemble troughing idlers, pivoting at the center and guided by edge rollers to align the belt.

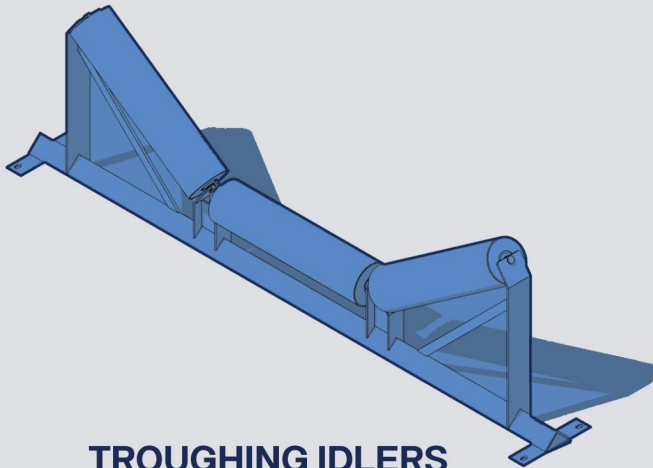


**TRANSITION IDLER**

**Enhanced Tension Management:**

Transition idlers optimize tension near head and tail pulleys by adjusting troughing angle from 0 to 45 degrees.

**Optimal Belt Shape:** These idlers create the right belt shape for efficient material transport, aiding tension distribution.

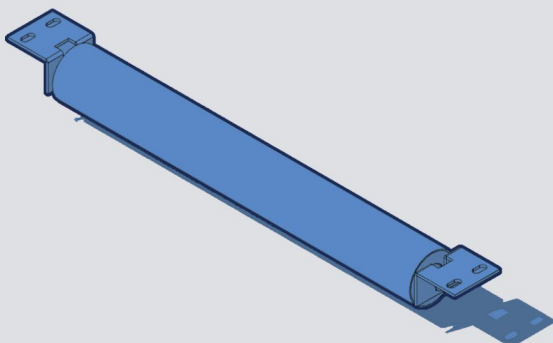


**TROUGHING IDLERS**

Troughers are commonly utilized idlers on the conveyor's carry side.

Enhancing their lifespan can pose difficulties. Our tested seal design and low-maintenance rollers minimize downtime and boost profits.

**DYNAMIC's troughing idlers** are available in angles of 20°, 35°, and 45°, meeting CEMA dimensional standards.

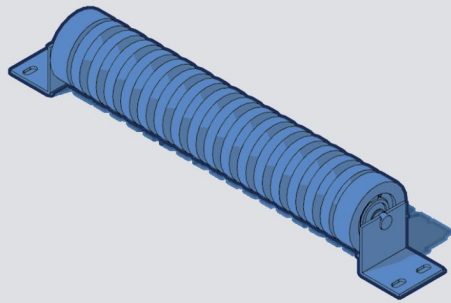


**FLAT RETURN IDLERS**

On the conveyor's return side, the flat return idler is commonly employed.

**DYNAMIC's flat return idlers** provide belt support, preventing stretching, sagging, and potential failure.

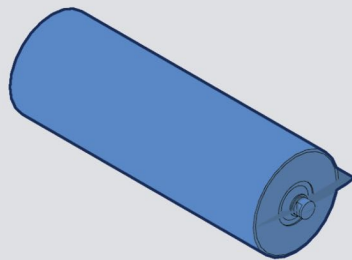
Comprising a solitary steel roll, these idlers are affixed to two drop brackets.



**RUBBER DISC FLAT  
IMPACT ROLLER**

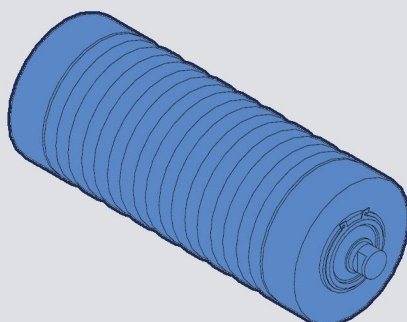
**Versatile Usage:** **DYNAMIC's** Rubber Disc Impact Rollers find widespread application in diverse industries and mining systems.

**Effective Shock Absorption:** These rollers support the belt, absorbing shock impact and dynamic forces from falling products.



**PRESSURE ROLLER**

**DYNAMIC'S Pressure roller** can be used in multiple ways, from keeping the belt's height in check to using it just as a medium to create pressure on passing material or for warehouse conveyors.

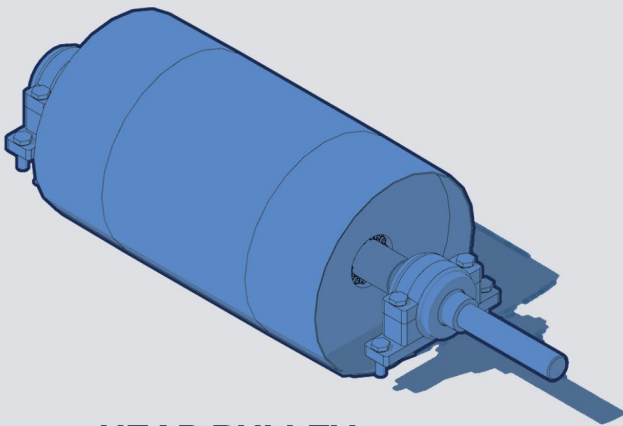


**IMPACT IDLER WITH  
RUBBER RINGS**

A significant challenge in sticky material applications is the removal of adhered material from the belt.

**DYNAMIC's rubber disc** returns assist by removing carryback.

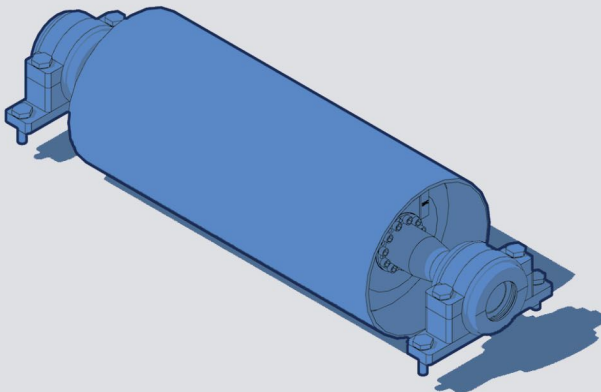
The rubber disc return idlers resemble flat returns, but feature strategically positioned rubber discs along the roll instead of a steel shell.



**HEAD PULLEY**

The drive pulley (Head Pulley) transmits power, categorized into light, medium, and heavy duty based on carrying capacity.

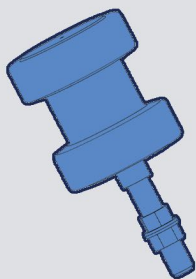
Drive pulleys vary in axle diameter and central span for the same diameter configuration.



**TAIL PULLEY**

The tail pulley enables the belt to rotate freely around the conveyor ends, typically with bearings on its inside or ends.

**DYNAMIC's tail pulley** is a pivotal part of the belt conveyor system.



**GUIDE ROLLER**

**DYNAMIC's Guide Rollers** ensure smooth motion, maintaining consistent linear path along guides or rails for safe load transport.

Guide rollers (conveyor side guides) aid in belt alignment, preventing drift and potential conveyor system damage.

# CONVEYER BELTING



**Head office** Near Hotel President, BLOCK-A, 904-905, Chimanlal Girdharlal Rd,  
Navrangpura, Ahmedabad, Gujarat-380009  
© +91 9662656666  
© +91 77790 96913

Marketing@dynamicrubbers.com

**Factory** Dynamic Rubbers Pvt Ltd - Kheda Unit  
(Conveyor belt and accessories Unit - 1)  
Survey no. 217 paint,  
Village: Ghodasar, Taluka: Mahemdavad,  
District: Kheda, Landmark: Haldarvas  
387110

**Bharat Rubber industries - Kolkata Unit**  
(Conveyor belt Unit - 2)  
Bodai panchayet road  
Vill& Po : Jugberia  
Kolkata 700110

**Conveyor  
Rollers &  
Pulleys  
Unit.** Plot No. 3302,  
Phase - IV, GIDC,  
Vatva,  
Ahmedabad - 382445

**Rubber  
Products &  
Belting  
Unit.**

D-111, Industrial Area ,  
RIICO , Palsana ,  
Dist . Sikar,  
Rajasthan